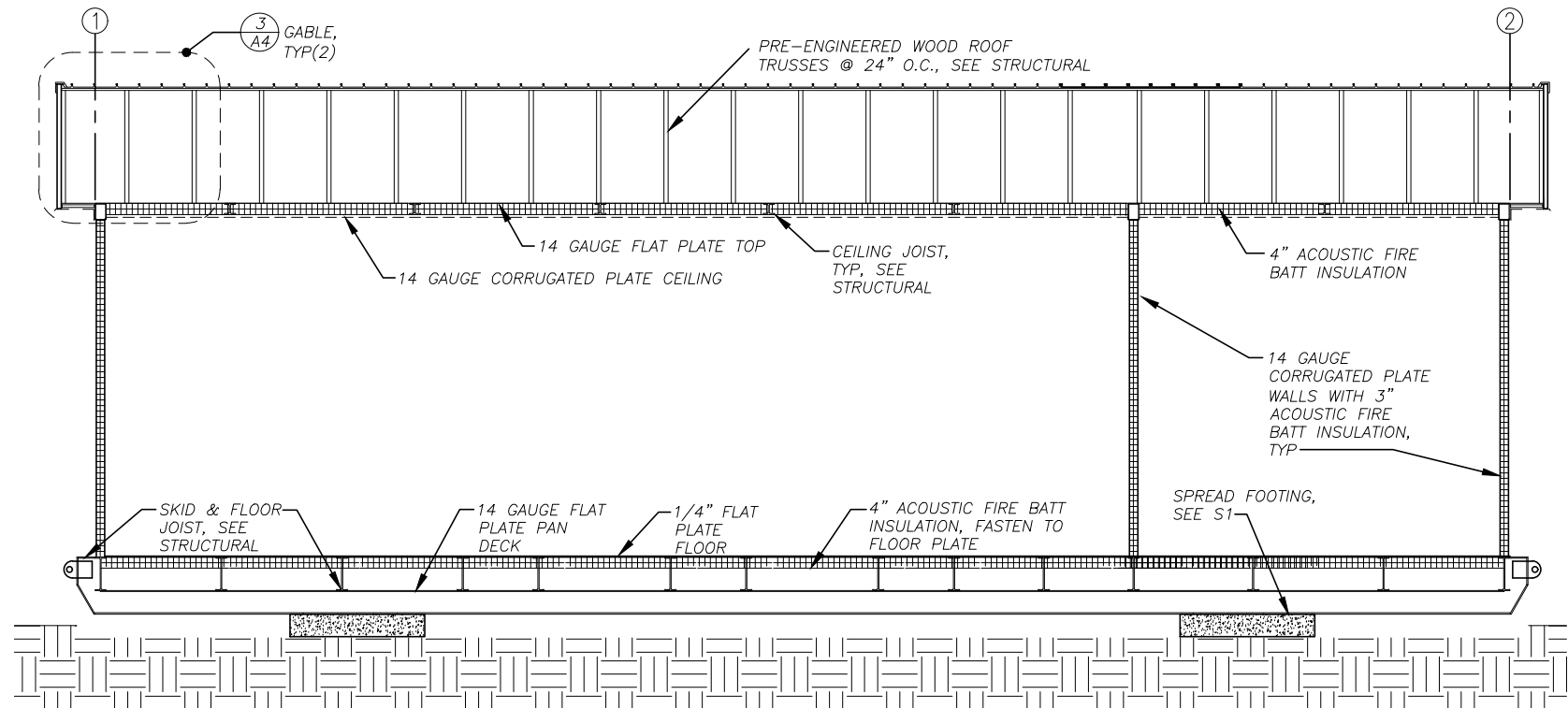
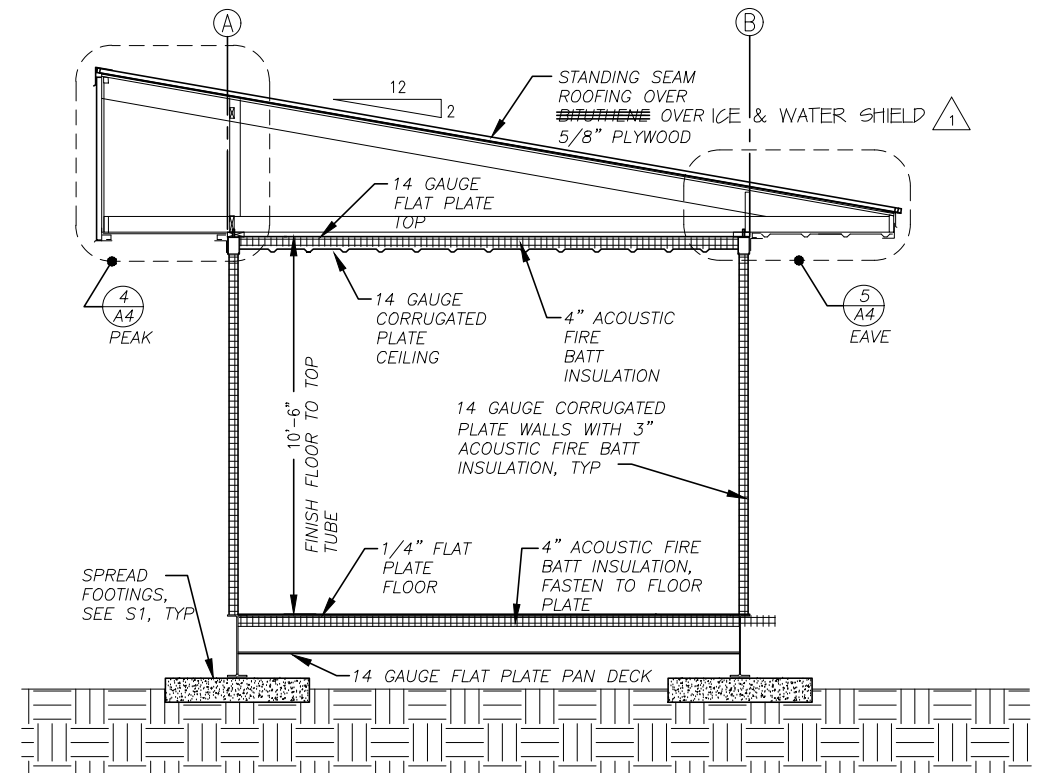


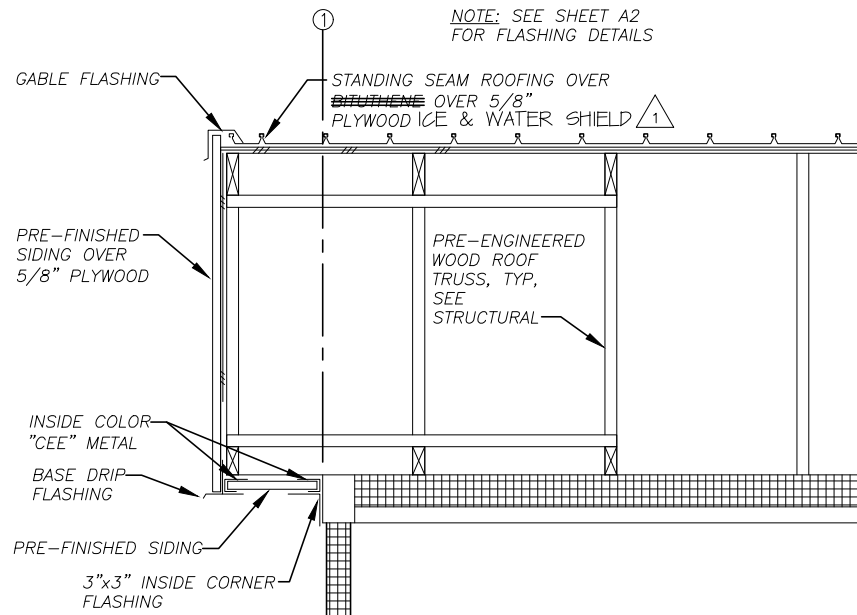
H:\Jobs\14-025 Perryville RPSU (AEA Term)\02 - CAD\Drawing\14025\_00\_MODULE ARCH, 1-1, 04-26-16 at 08:13 by VJB  
LAYOUT: A4



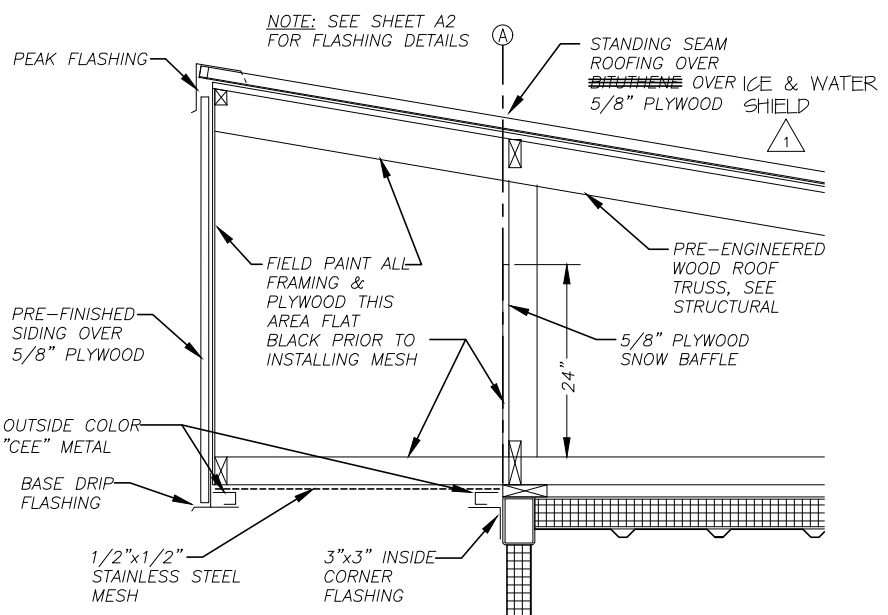
1  
A4  
BUILDING SECTION  
3/8"=1'-0"



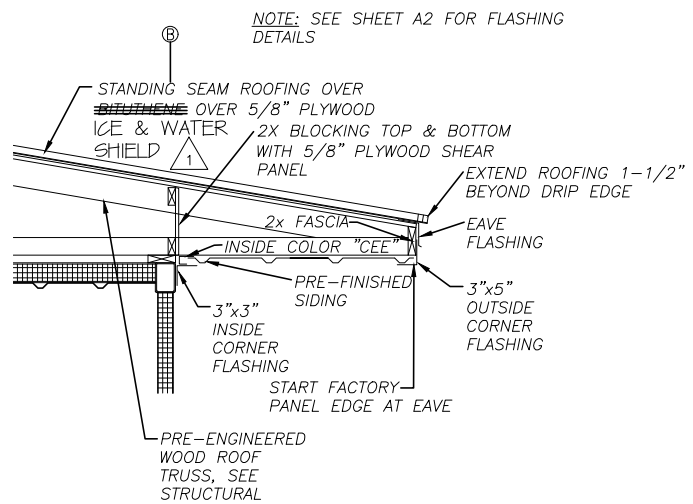
2  
A4  
BUILDING SECTION  
3/8"=1'-0"



3  
A4  
GABLE DETAIL  
1"=1'-0"



4  
A4  
PEAK DETAIL  
1"=1'-0"



5  
A4  
EAVE DETAIL  
1"=1'-0"

CONTRACTOR SHALL FURNISH AND INSTALL ROOF FOR GENERATOR MODULE, AS SHOWN.

REVISIONS	DATE	DESCRIPTION
1	7/12/16	APPENDUM 1
2		
3		
4		
5		



HATTENBURG DILLEY & LINNELL  
Engineering Consultants  
P.O. 111405  
ANCHORAGE, AK 99511  
(907) 448-2100 - ANCHORAGE  
(907) 748-5230 - PALMER  
www.hdlalaska.com

PERRYVILLE RPSU PROJECT  
AIDEA/AEA  
PERRYVILLE, ALASKA

SHEET TITLE
BUILDING SECTIONS & DETAILS
SHEET
A4
DRAWN BY
WJP
CHECKED BY
BCG
DATE
09/25/15
SCALE
AS SHOWN
JOB NUMBER